



G E M I N I 2 2 0

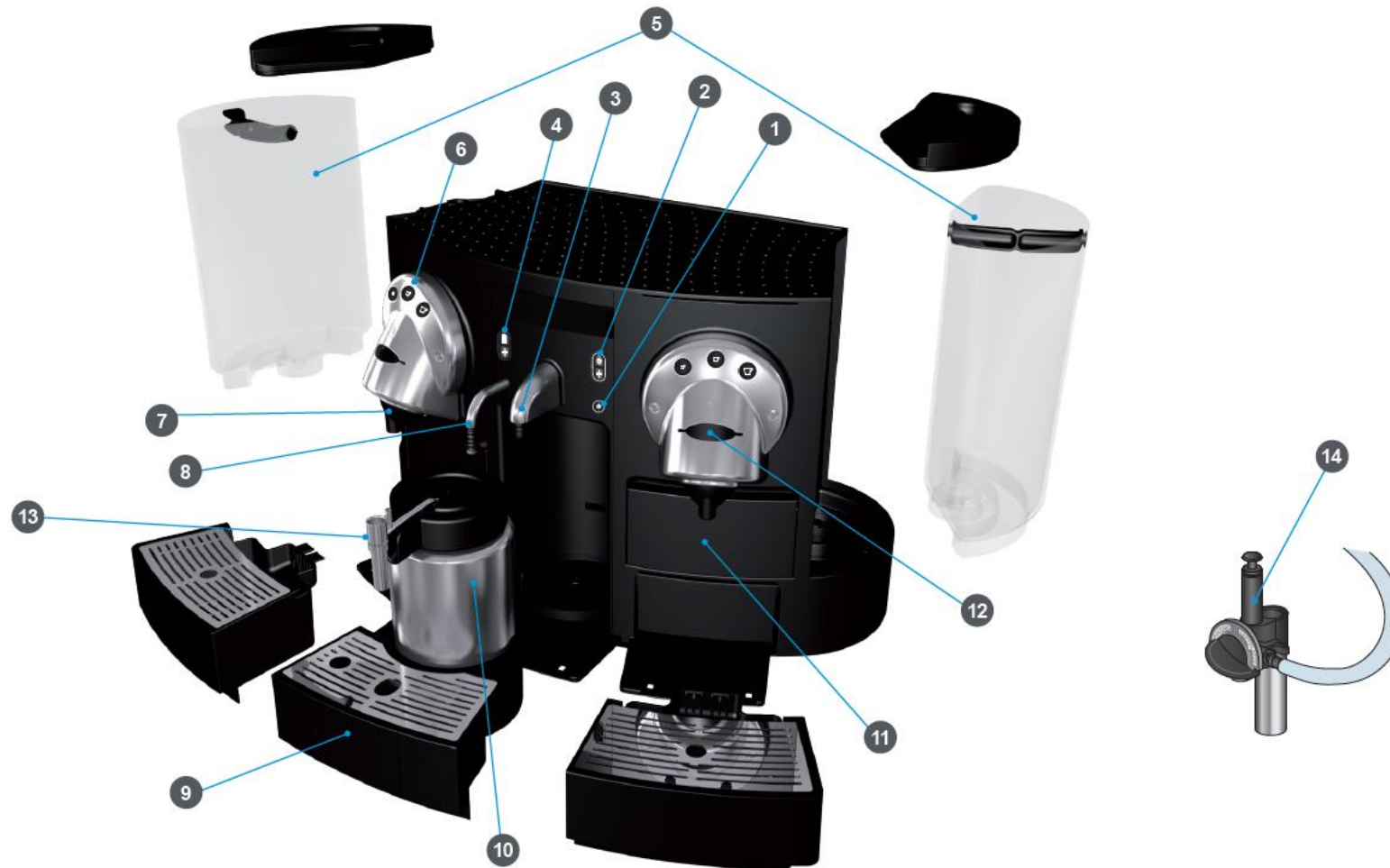
User Manual

NESPRESSO®

Content

Machine Overview	3-4-5
First Use.....	6
Safety Measures	7
Start Up.....	8
Coffee Preparation	9
Hot Water Preparation.....	10
Cappuccino/Latte Macchiato/Milk Froth.....	11-12
Cleaning of Milk Container.....	13-14
Stand-by process after milk preparation.....	15
Button Colours.....	16
Display Messages.....	17-21
Machine Settings Menu - without direct water connection.....	22
Machine Settings Menu - with direct water connection enabled by service provider.....	23
Removal of water tanks - with direct water connection.....	24
Removal of water tanks - without direct water connection.....	25
Daily cleaning - with direct water connection.....	26
Daily cleaning - without direct water connection.....	27
Programming cup length.....	28
Descaling.....	29-32
Accessories.....	33
Technical Data.....	34
Machine Performance.....	34
Recycling.....	35
EC declaration of conformity.....	36
Contact	36

Machine Overview



Makineye Genel Bakış



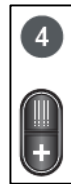
Standby button



Milk button



Milk froth outlet



Hot water button



Water tanks



Ristretto, Espresso and Lungo buttons



Coffee outlet



Hot water outlet



Drip trays and grids



Milk container



Capsule container



Capsule insertion slot

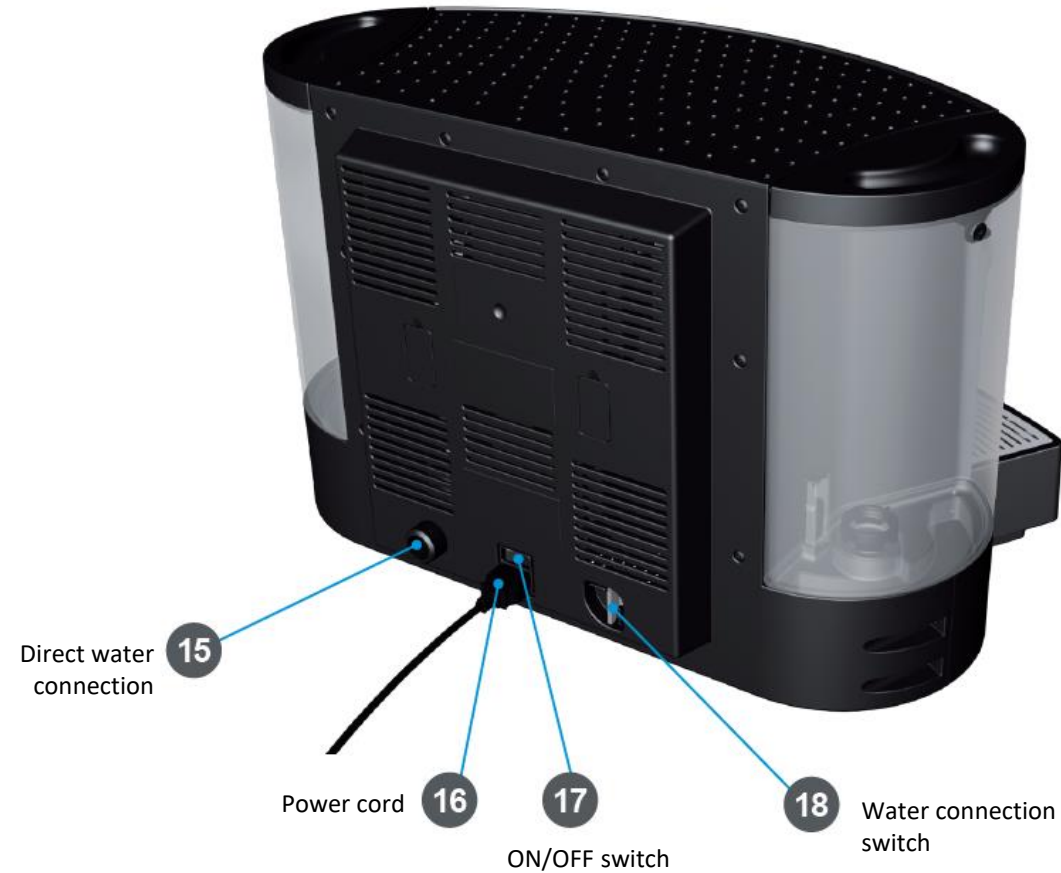


Disposable milk nozzle

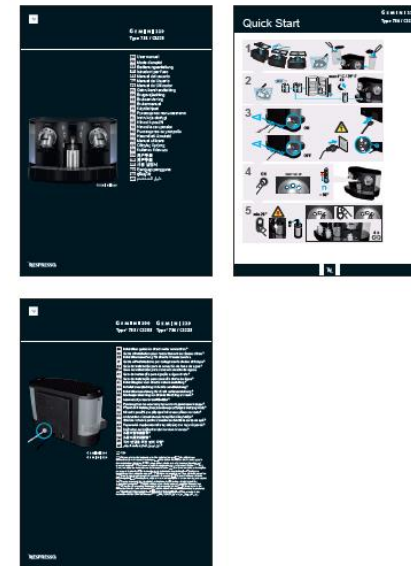
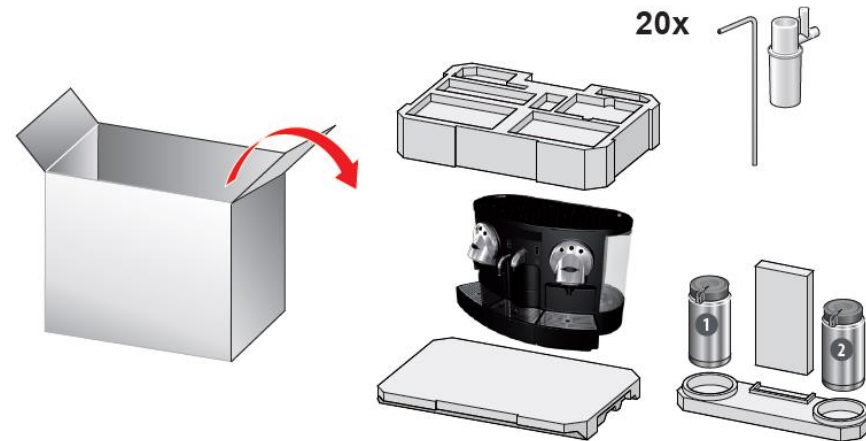


Reusable milk nozzle

Makineye Genel Bakış



First Use



Read user manual before first use. Always read the safety notices before first use (additional manual).

Safety Measures

Read these instructions carefully before using your new Nespresso machine for the first time. Keep them in a place where you can find and refer to them later on. Improper use of the machine releases Nespresso from any liability.

- In case of an emergency: immediately remove the plug from the power socket.
- Children should never use the appliance without close adult supervision.
- This appliance can be used by children aged from 8 years and above and persons with reduced physical, sensory or mental capabilities or lack of experience and knowledge if they have been given supervision or instruction concerning use of the appliance in a safe way and understand the hazards involved.
- Children shall not play with the appliance.
- Cleaning and user maintenance shall not be made by children without supervision.
- Children should be supervised to ensure that they not play with the appliance.
- Check that the voltage quoted on the rating plate is the same as your mains voltage.
- Use only the specific power supply cord delivered with the machine and connect your appliance only to an earthed power socket.

- Switch OFF with the On/Off switch at the back of the machine before disconnecting power cord from electrical outlet or from machine. The use of incorrect connections voids the warranty!
- This machine is designed for indoor use only. Keep it in a controlled environment (protected from dust, moisture, direct sunlight, pests, etc.). Conditions of use: between 5°C to 35°C.
- The hot water tube and the streams of hot water, steam, coffee and hot milk are very hot. Avoid direct contact with the skin. Danger of scalding!
- Be careful while removing disposable nozzle and straw from steam outlet. Hot milk might drip.
- Always fill the water tanks with potable water.
- Empty water tanks if machine will not be used for an extended time (holidays etc.).
- Replace water in water tanks before machine is put into operation after a weekend or a similar period of time.
- Remove the plug from the mains socket if you will not be using the machine for an extended time (holidays). Before cleaning and servicing, remove the plug from the mains socket and let the machine cool down. Do not unplug by pulling the cable.
- Do not use the machine if it is not operating perfectly or if it shows any sign of damage. In case of any malfunction or damage notify your nearest Nespresso authorized after sales centre.

- All operations other than normal use, cleaning, and servicing must be performed by the Nespresso authorized after sales centre.
- Never immerse the machine, cable, or plug in water or any other liquid.
- Keep the cable out of reach of children.
- Never leave the cable near or in contact with hot parts of the machine, a source of heat, or a sharp edge.
- When the cable or plug is damaged, you may not use the machine. In order to avoid danger, have the defective part repaired or replaced by the Nespresso authorized after sales centre.
- Never place the machine on a hot surface, e.g. A heating plate. Never use it around an open flame.
- Place the machine on a flat, stable, heat resistant surface away from water splashes.
- For your own safety, you should use parts and accessories from Nespresso that are made for your machine.
- Never use the machine without the drip tray or the drip grid.
- This machine is designed for Nespresso® Pro capsules, available through Nespresso and its authorized distributors.
- All Nespresso machines must pass stringent controls. Reliability tests under practical conditions are performed randomly on selected units. This can show traces of any previous use.
- The manufacturer cannot be held liable for any damage caused by not intended use or inappropriate handling of the machine.

- Any damages related to the connection of the machine directly to the water mains supply are not covered by warranty if the connection is not performed by a certified technician.
 - The «direct water connection» switch must always be set to OFF when no direct water mains supply is used.
 - If the machine is connected directly to the direct water mains supply, always turn the machine OFF and set the «direct water connection» switch to OFF before removing one or both water tanks.
 - To avoid any risk of flooding, in case the flow rate increases more than 0.5 L/min, an automatic flow-stop system should be installed by a specialist (not provided with the machine).
 - If no responsible person is present (e.g. at night, weekends, vacations, etc.), the connection to the water mains supply must be closed.
- Descaling:**
- 1. Preparation: please read carefully the safety instructions on the descaling agent packaging and follow the descaling instructions from the descaling manual or user manual.
 - 2. Descaling: do not use the machine for any other purpose during the descaling process.
 - 3. Rinse: rinse the water tanks and clean the machine to avoid any residual descaling solution.
 - Disposal: Take the appliance to your public waste disposal centre or to your customer service.
- Evde Kullanım:**
- This appliance is intended to be used in household and similar applications such as:

- staff kitchen areas in shops, offices and other working environments;
- farm houses;
- by clients in hotels, motels and other residential type environments;
- bed and breakfast type environments.

TİCARİ AMAÇLI KULLANIMI

Type 733 / CS203 is an Espresso coffee maker (or machine) Type 734 / CS223 is an Espresso coffee maker (or machine)

Office use: At least one copy of this user manual should be kept in a location available at all times to maintenance and management.

GENERAL INFORMATION

Intended use

This machine is meant to be used in a professional environment by the personnel listed below:

- Self-serve users: Self-serve users are users guided by the screen instructions to operate the machine in a safe mode. Self-serve users must not conduct any maintenance operations.
- Trained operator staff:

Trained operator staff are staff able to operate the machine and execute the cleaning and maintenance activities described in this manual.

This appliance is intended to be used by expert or trained users in shops, in light industry and on farms, or for commercial use by lay persons.

INSTALLATION INSTRUCTION

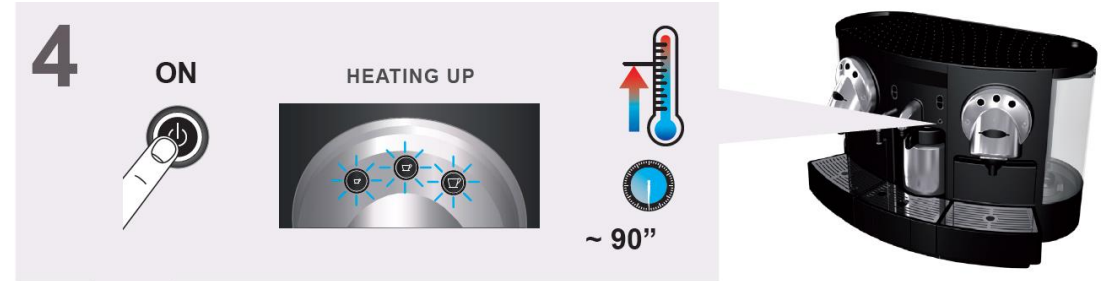
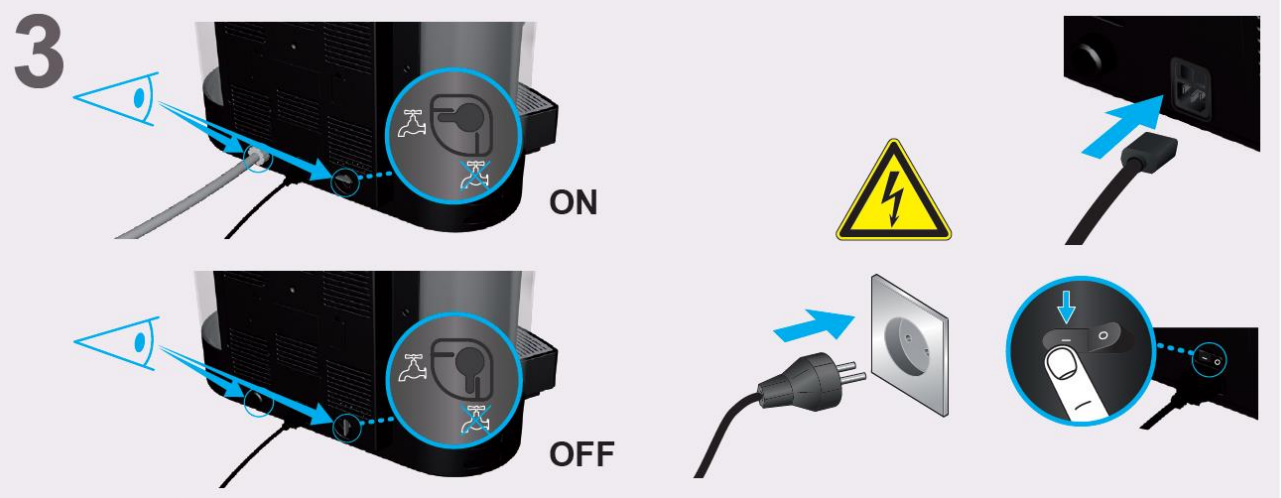
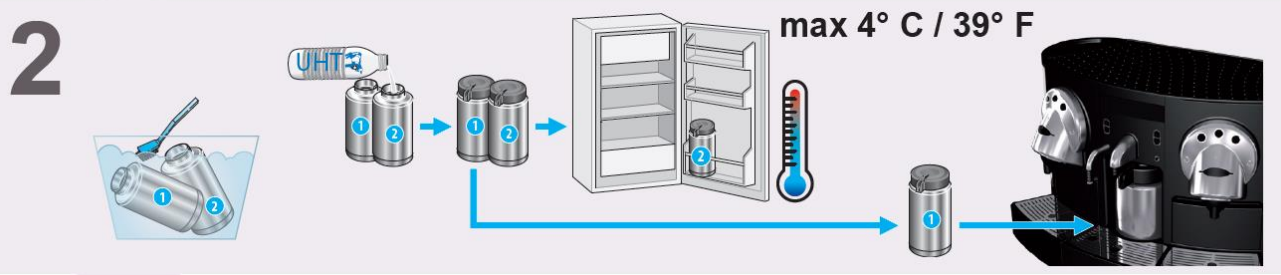
The upper edge of the coffee machine must be installed:

- over 1.20 m from the ground
- in a horizontal position
- in an area where no water jet could be used for cleaning.

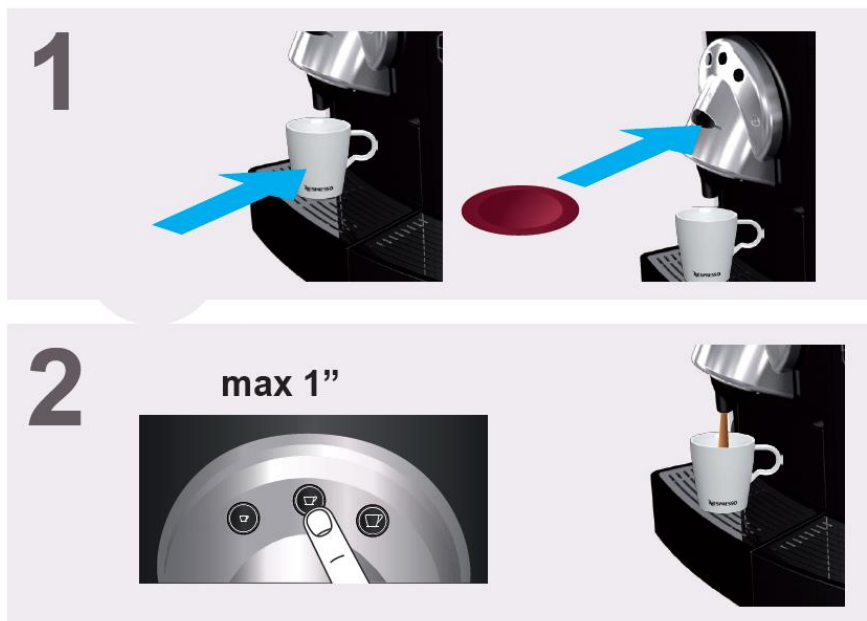
SAVE THESE INSTRUCTIONS

Pass them on to any subsequent user. This Instruction Manual is also available as a pdf at [nespresso.com/pro](https://www.nespresso.com/pro)

Start Up (milk, see p. 11)



Coffee Preparation



Hot Water Preparation



1



max 1''



2



Cappuccino / Latte Macchiato / Milk Froth

Milk Froth / Hot milk



1A



2

max 1"



1B



Süt köpüğü
~131°F
~55°C



Sıcak Süt
167°F
75°C



~131°F > 167°F
~55°C > 75°C



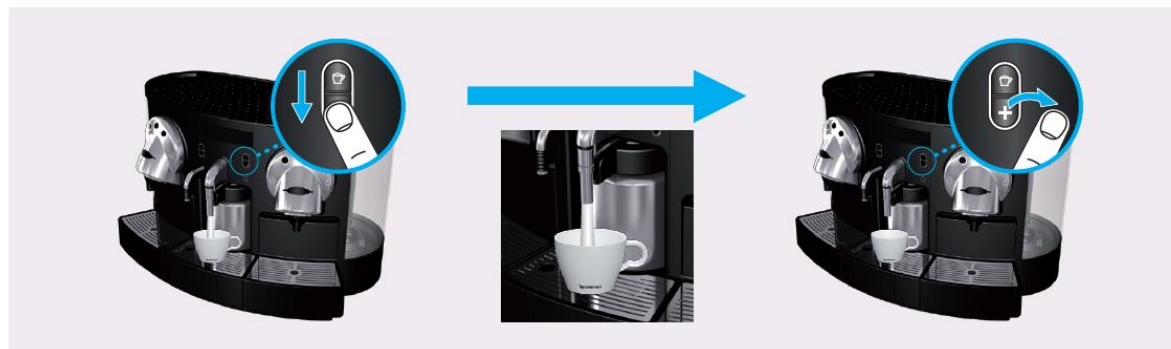
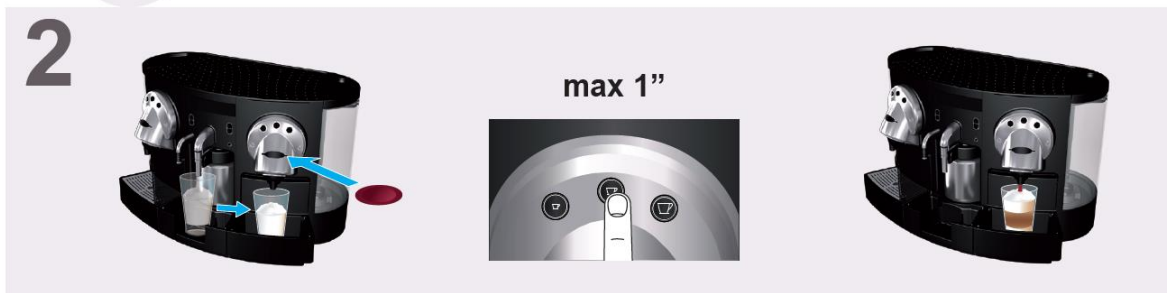
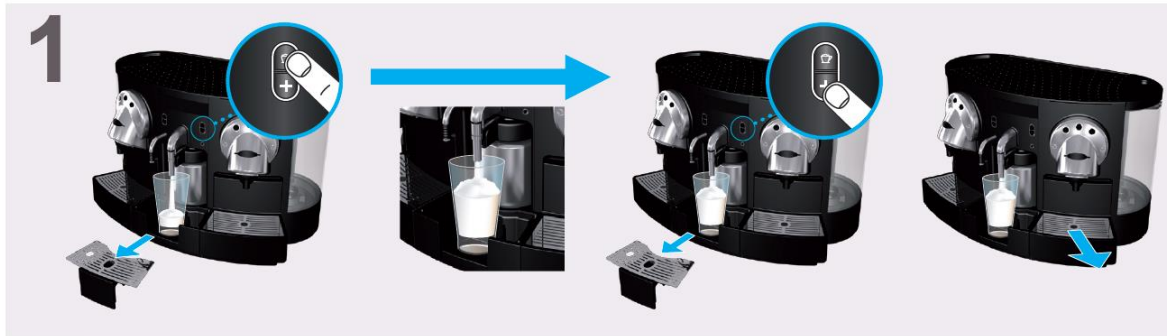
3



max 1"



Cappuccino / Latte Macchiato / Milk Froth

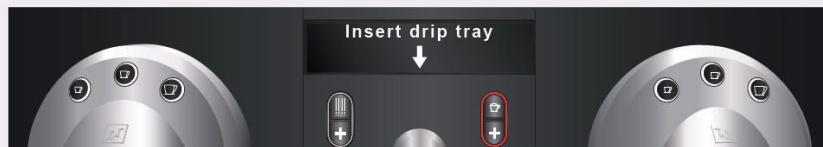
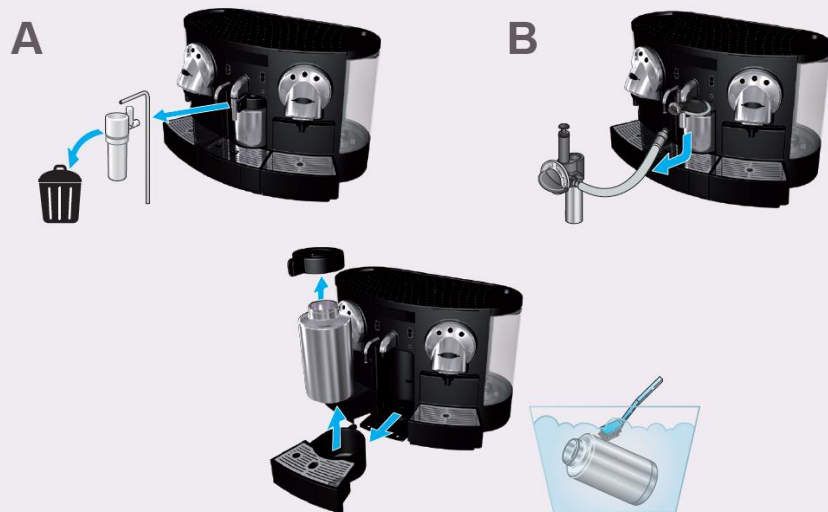
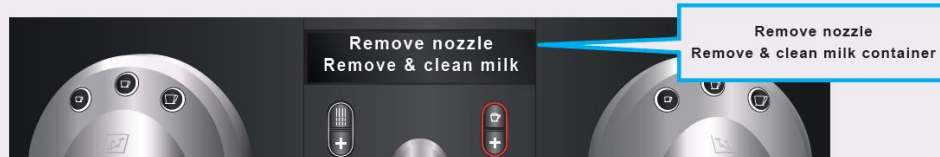


Cleaning of Milk Container

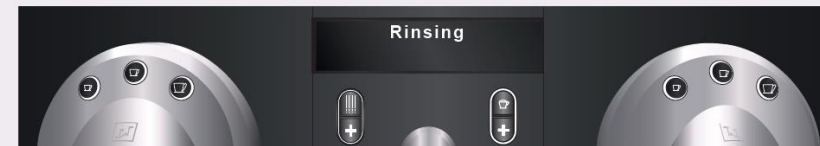
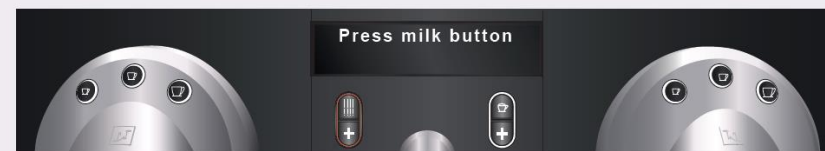
4h



1

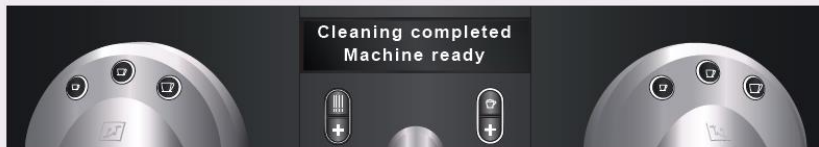
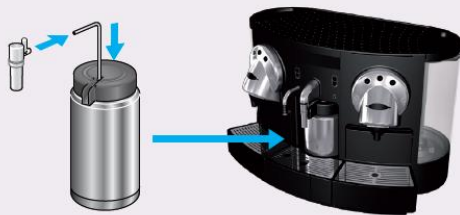
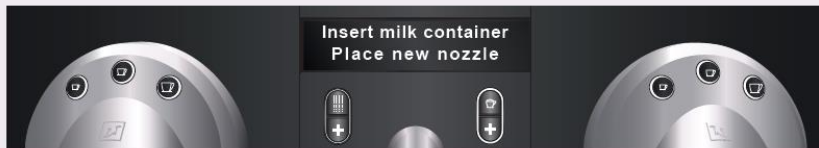


2

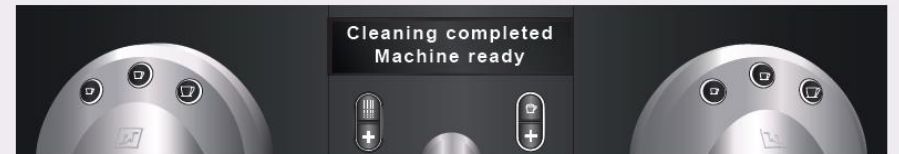
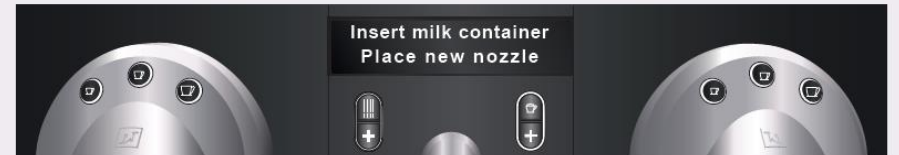


Cleaning of Milk Container

3A



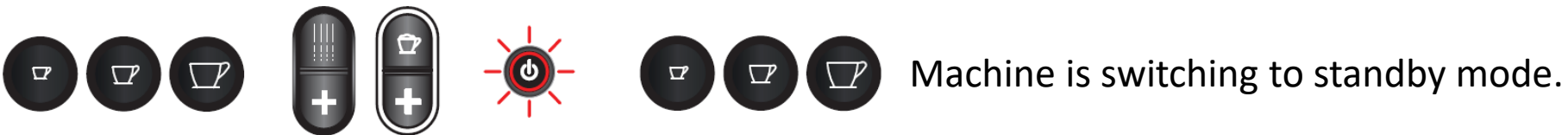
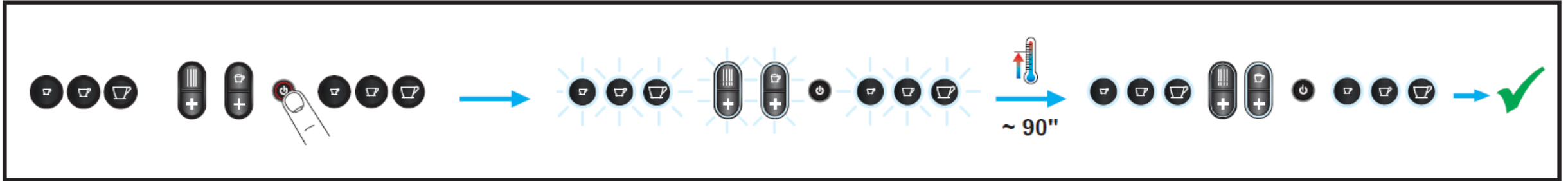
3B



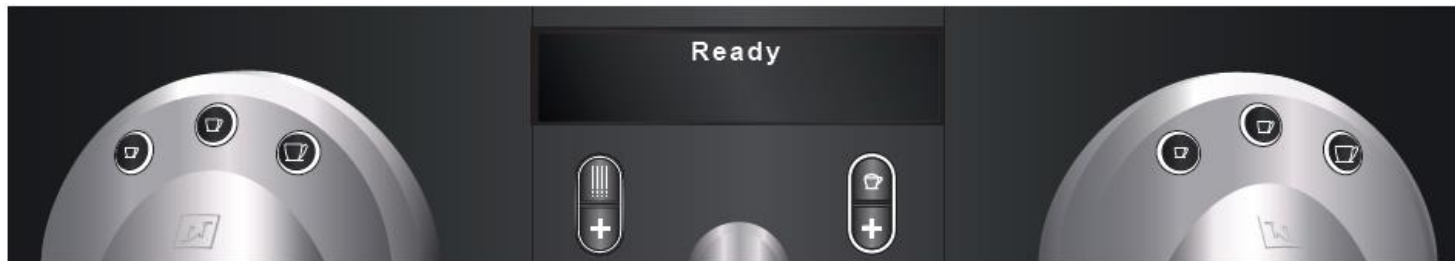
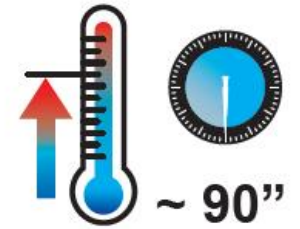
Stand-by process after milk preparation



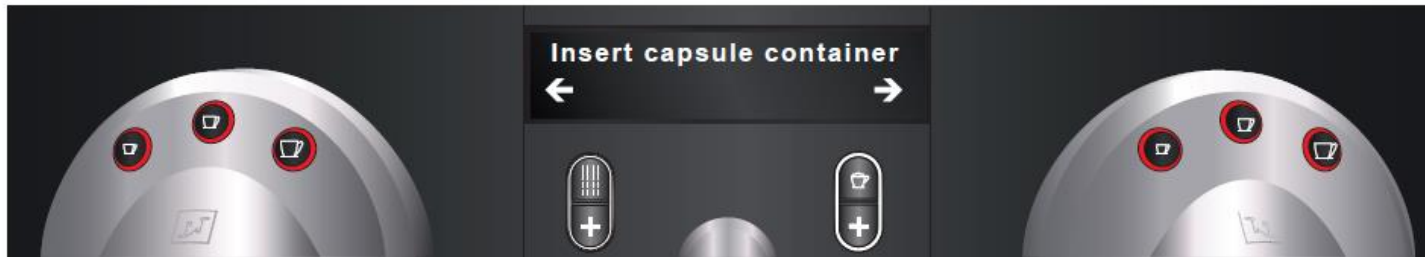
Button Colours



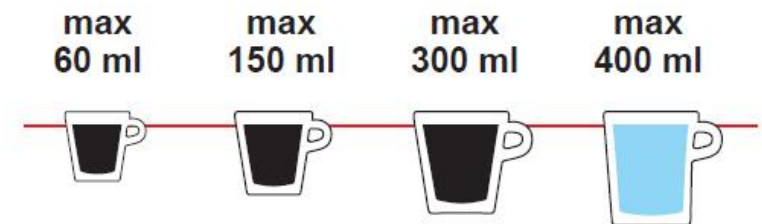
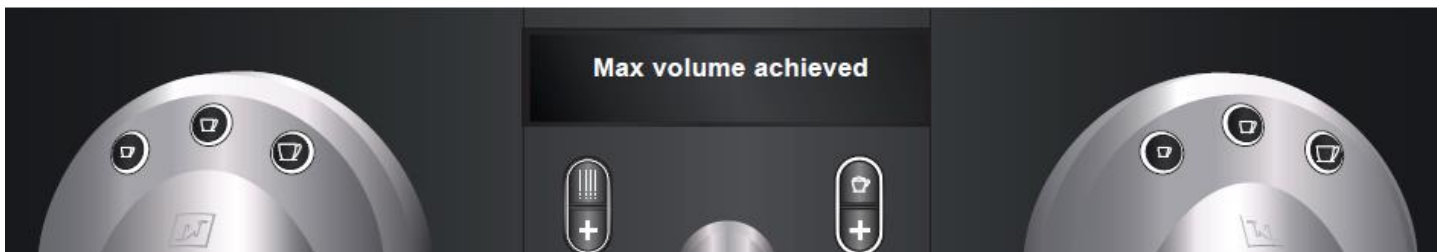
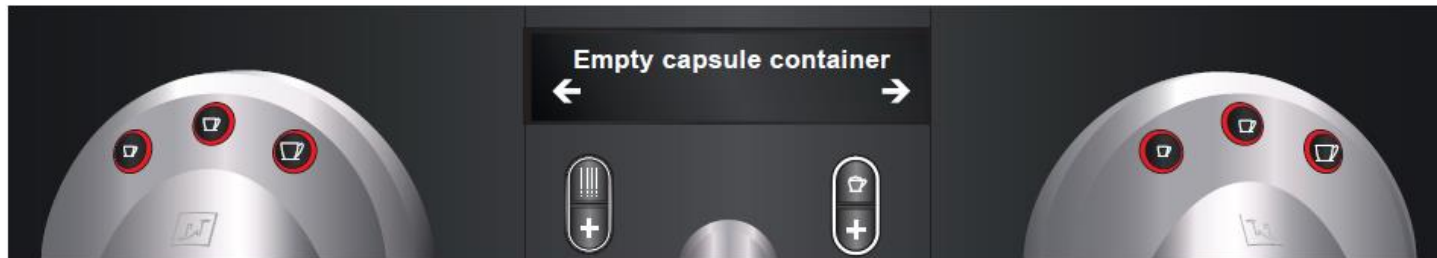
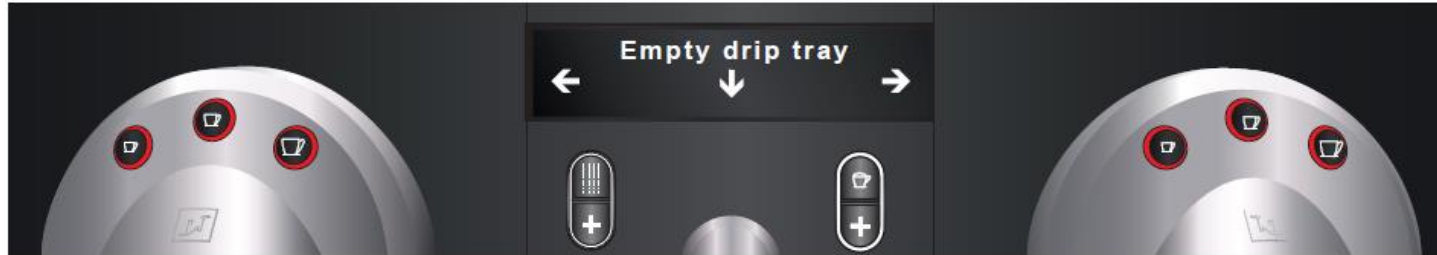
Display Messages



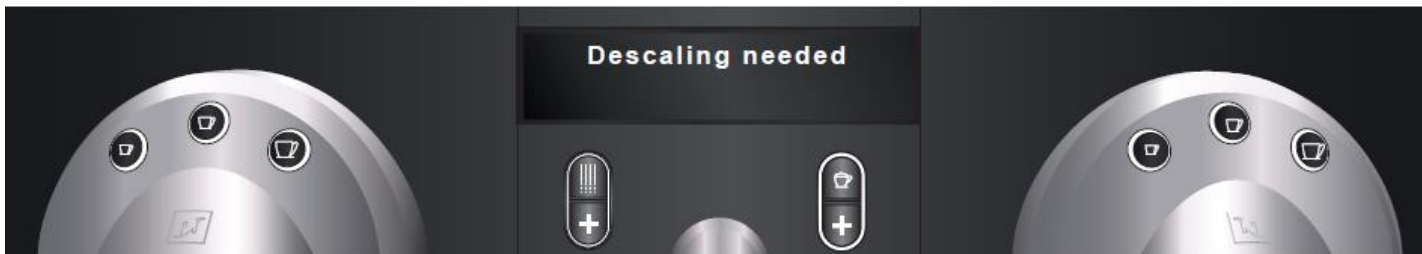
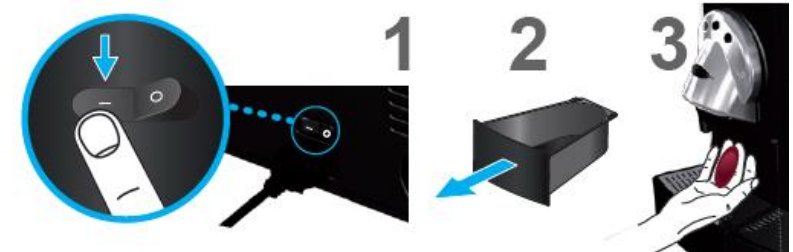
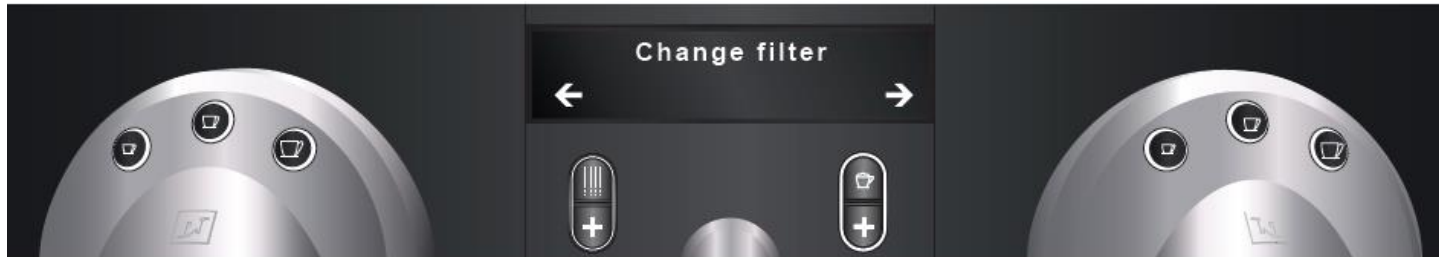
Display Messages



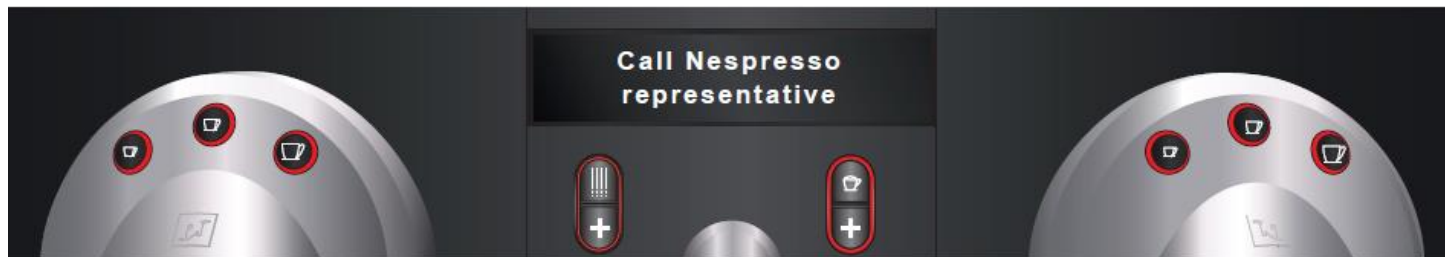
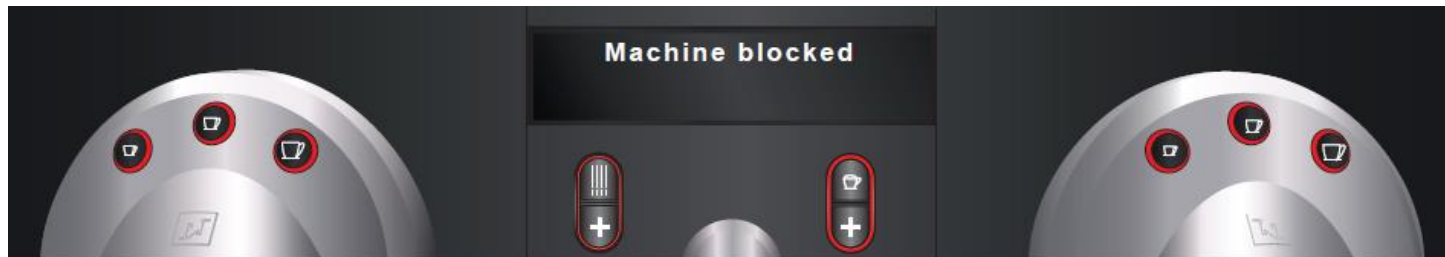
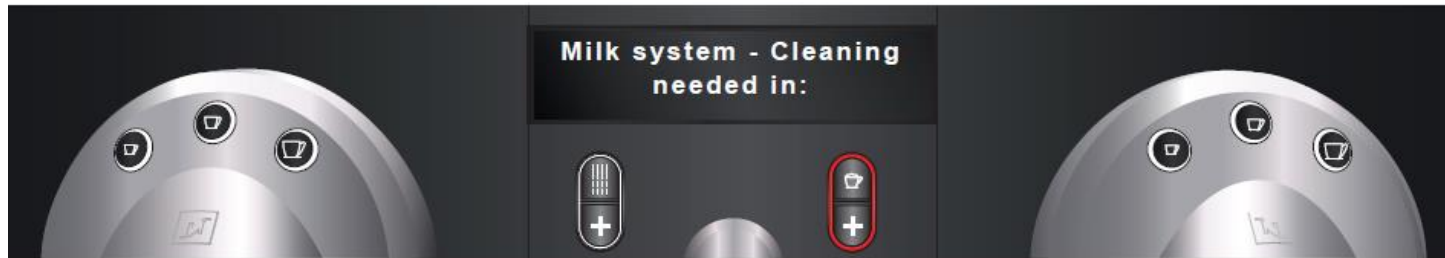
Display Messages



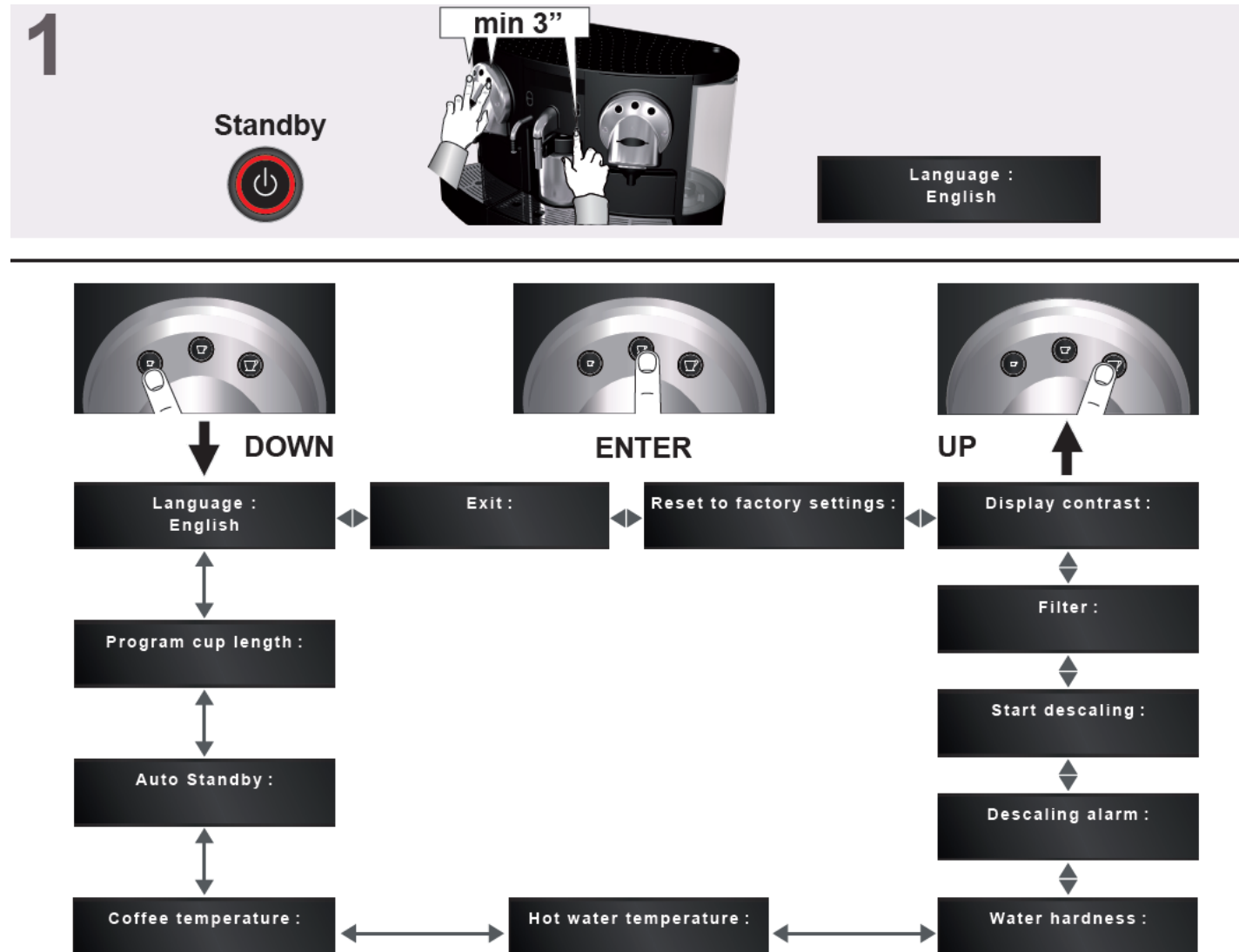
Display Messages



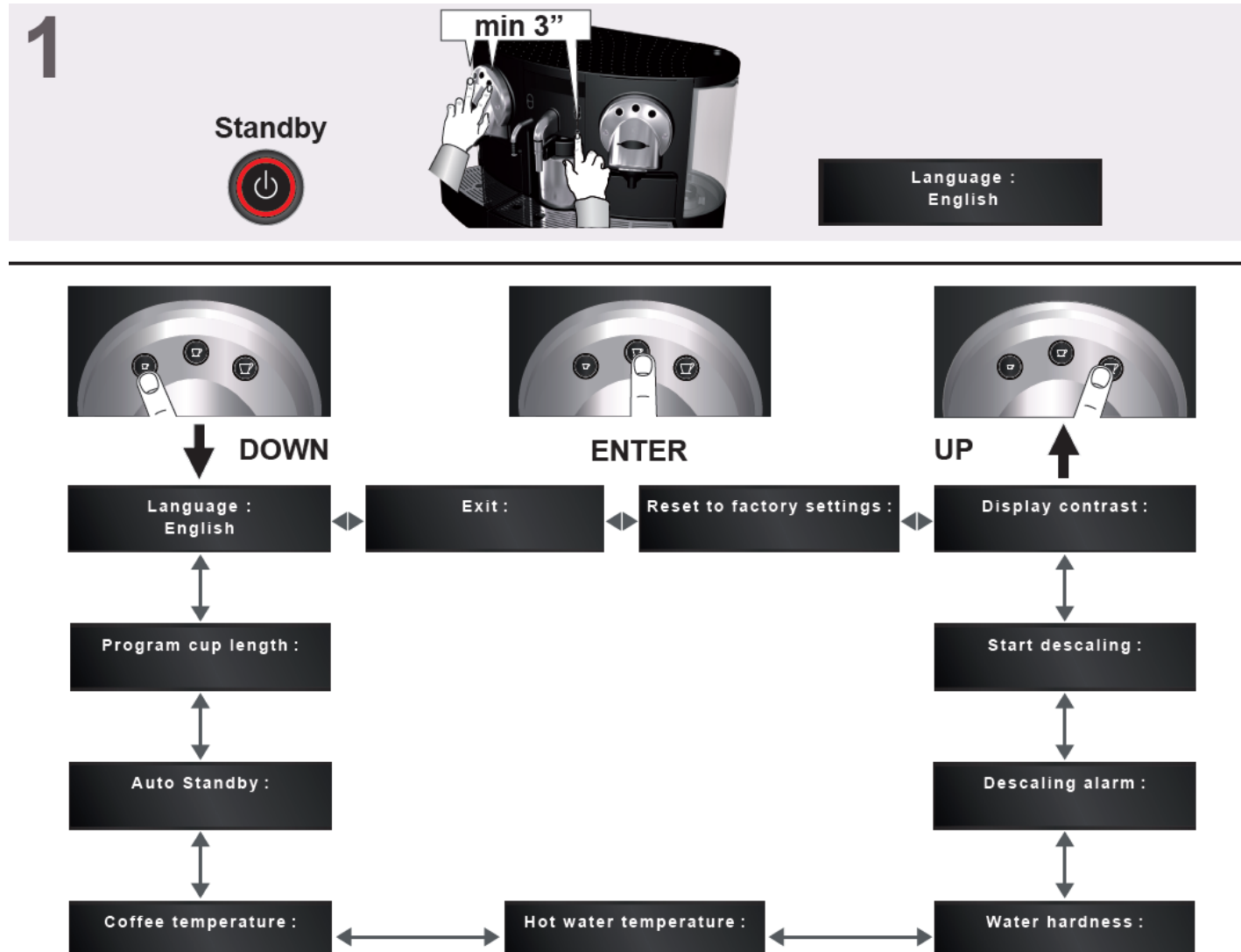
Display Messages



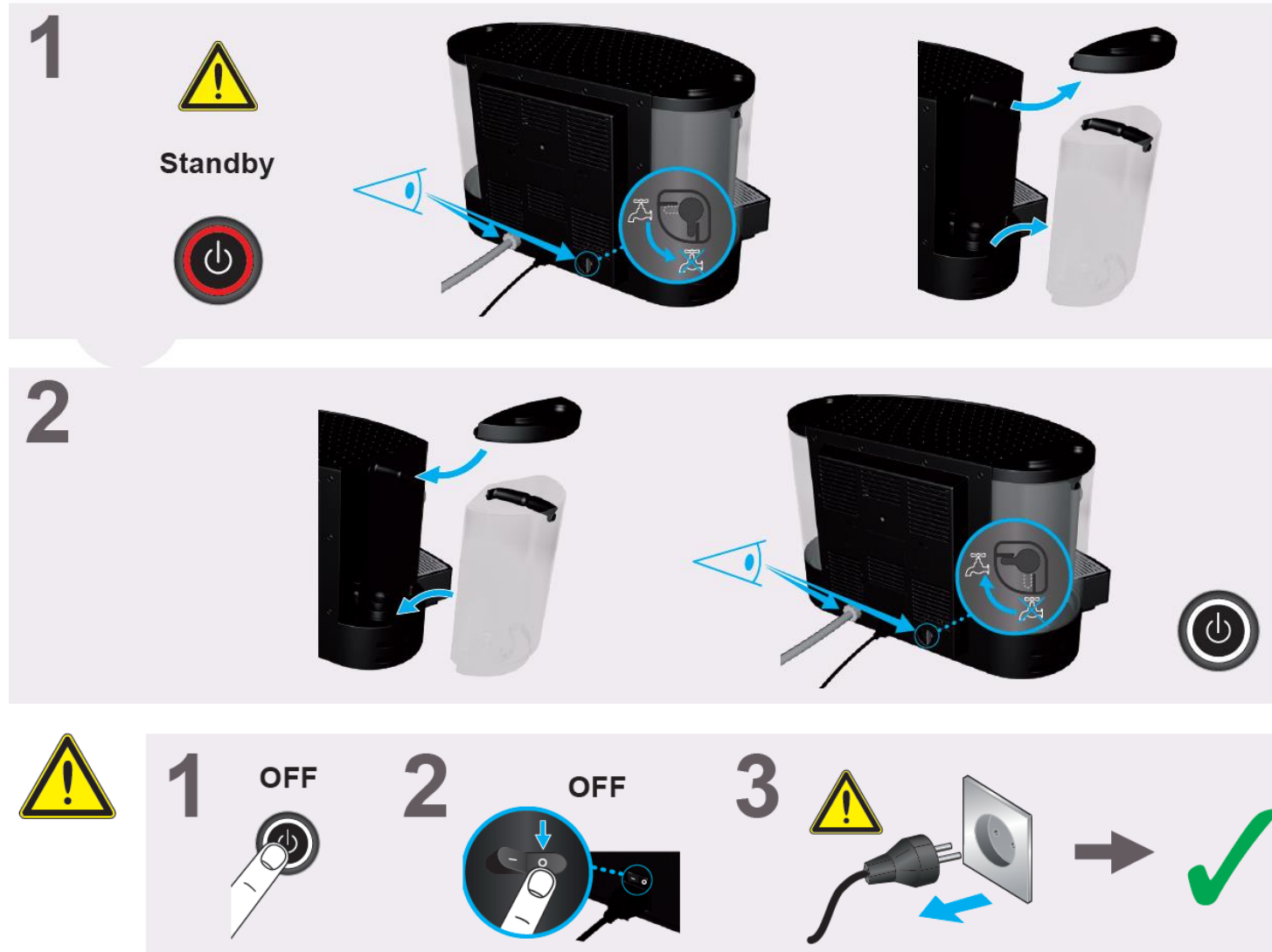
Machine Settings Menu - without direct water connection



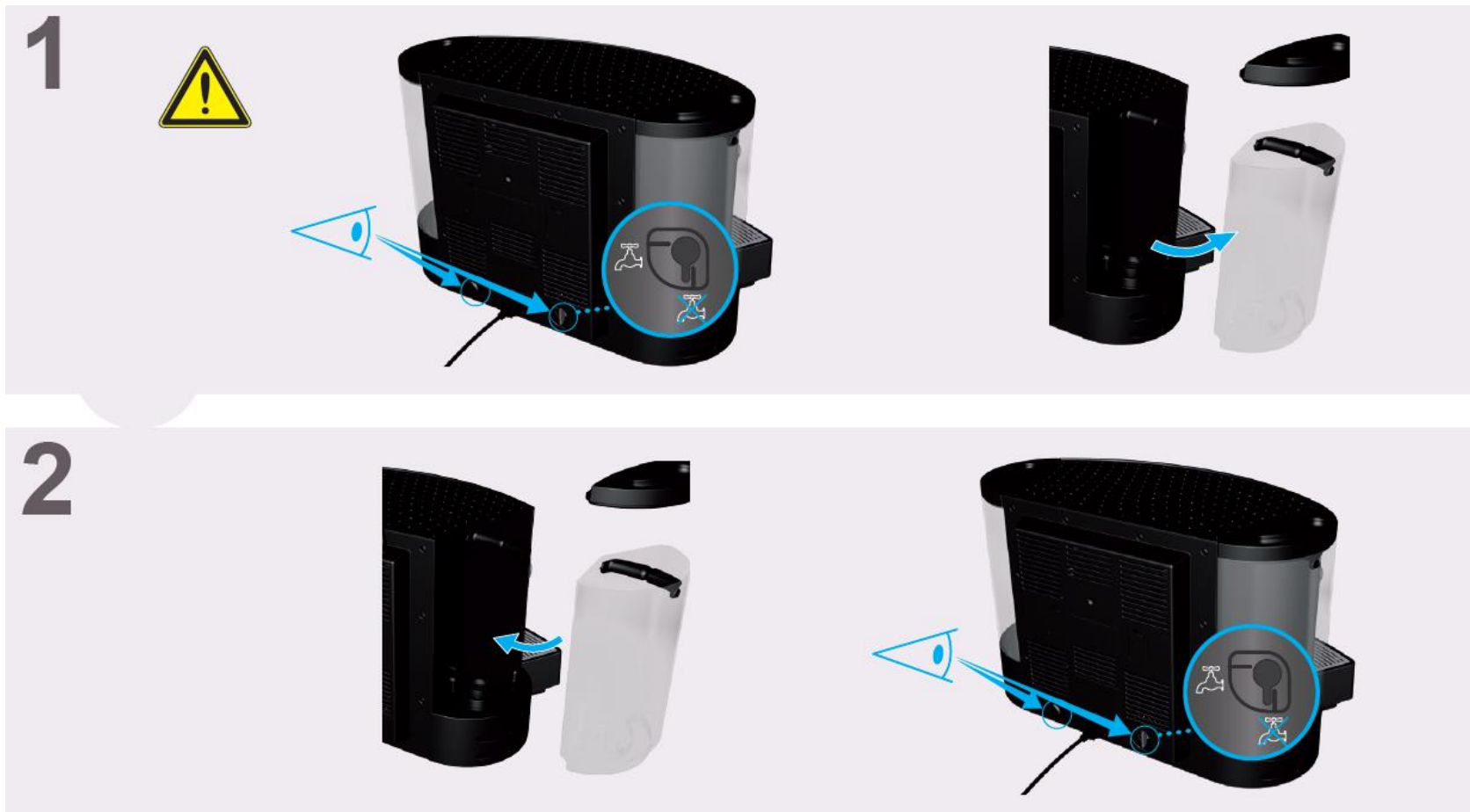
Machine Settings Menu - with direct water connection enabled by service provider



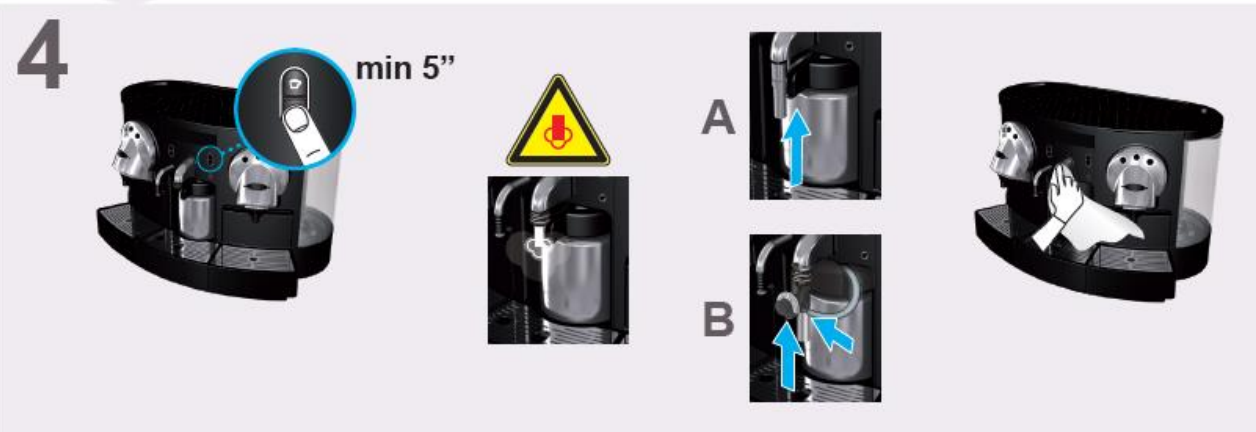
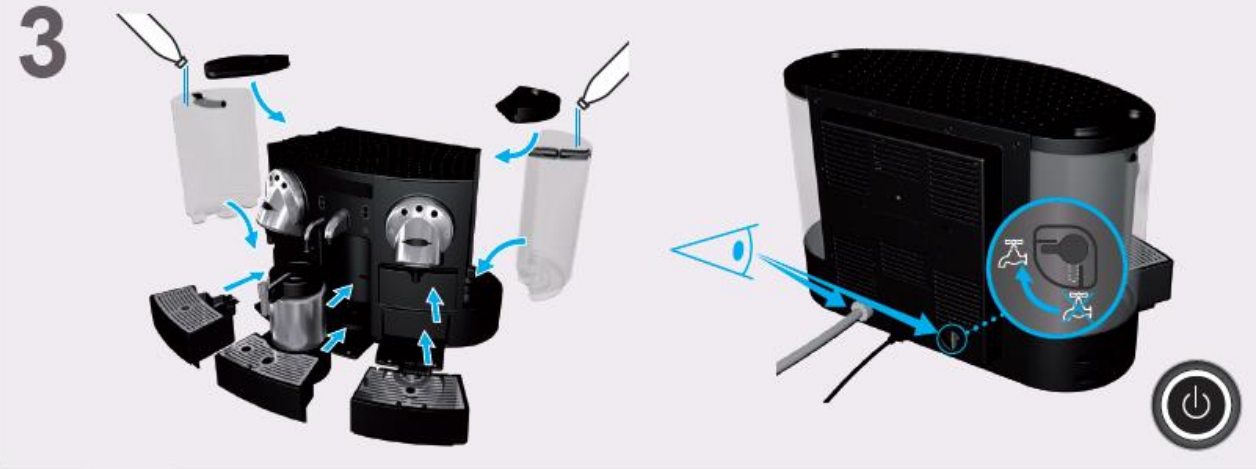
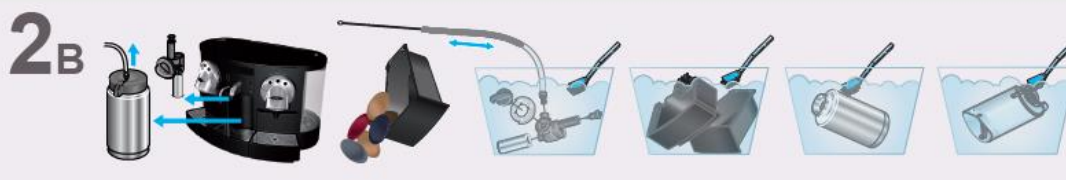
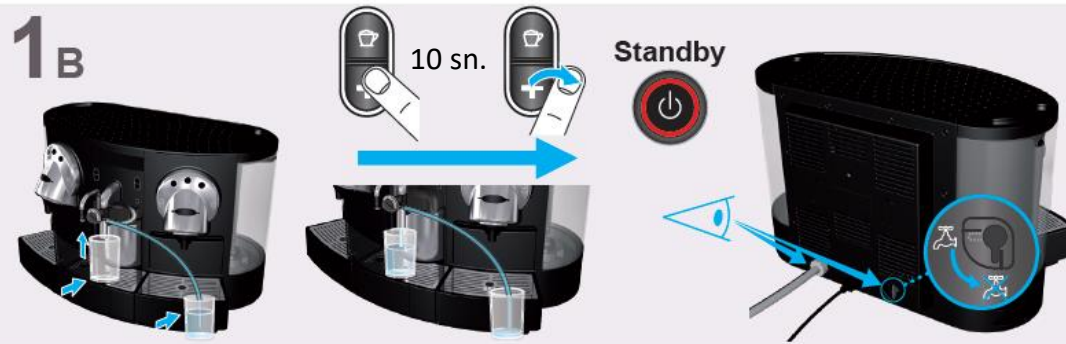
Removal of water tanks - with direct water connection



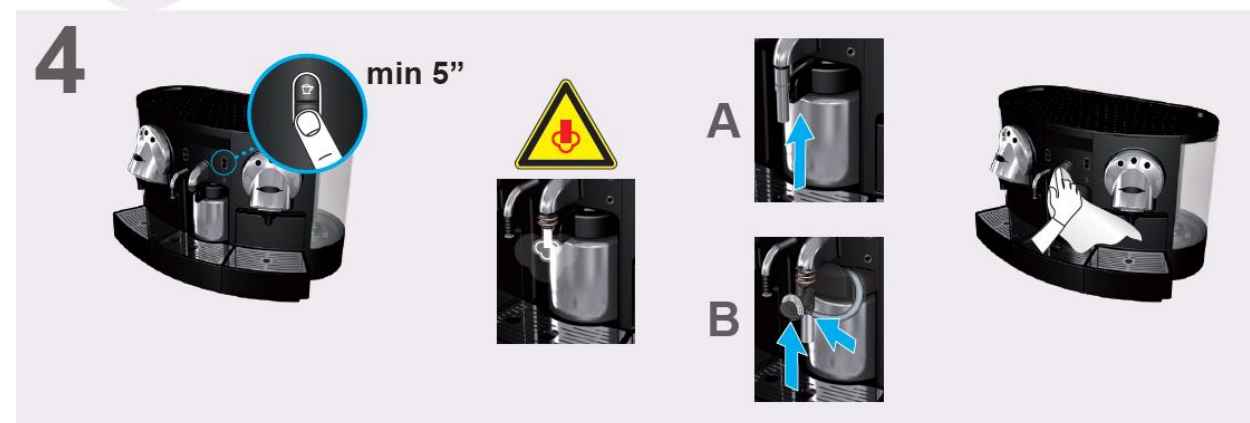
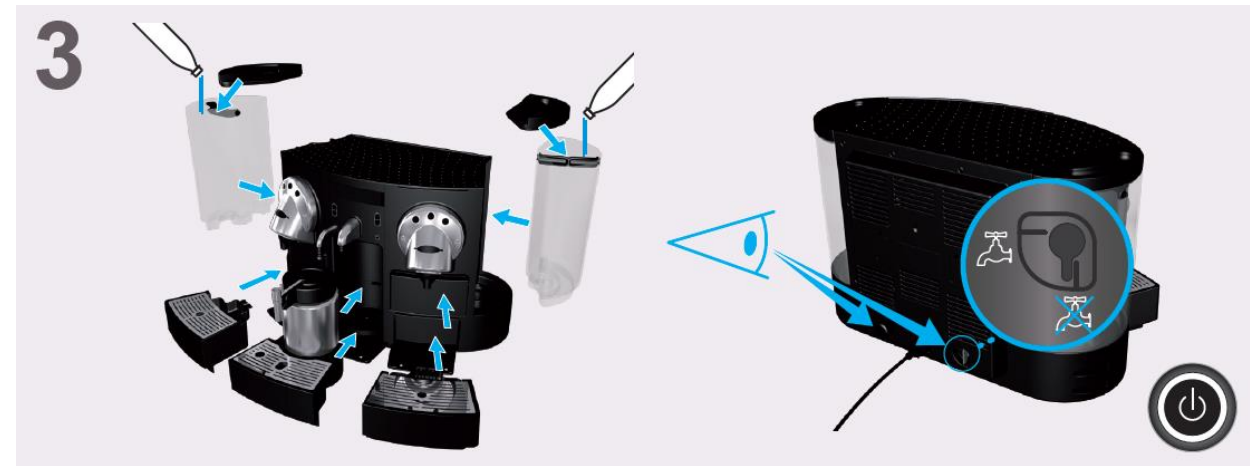
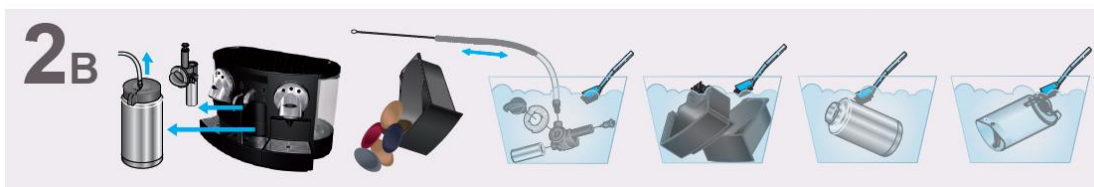
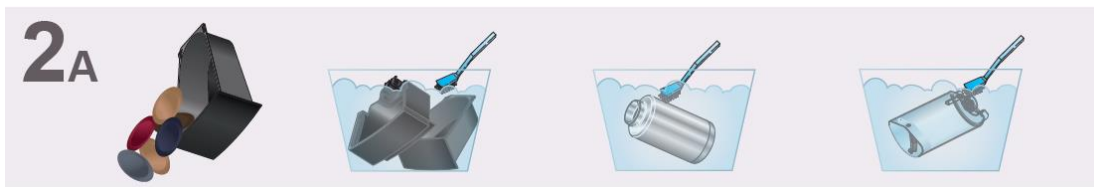
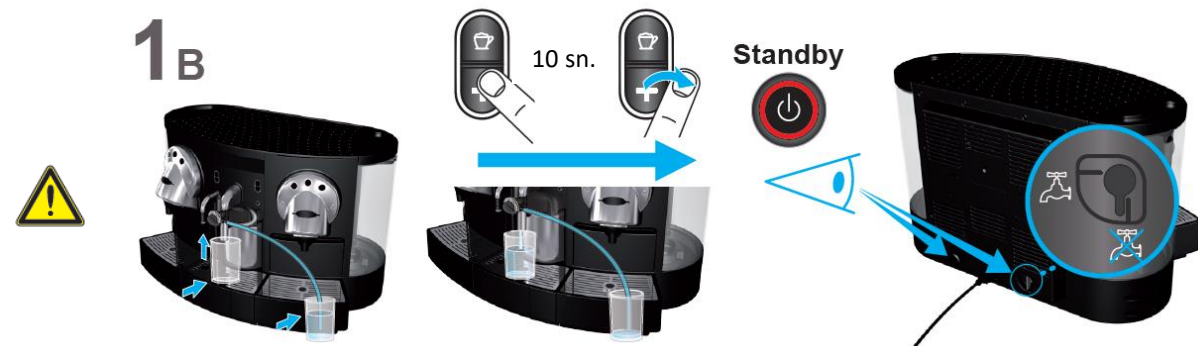
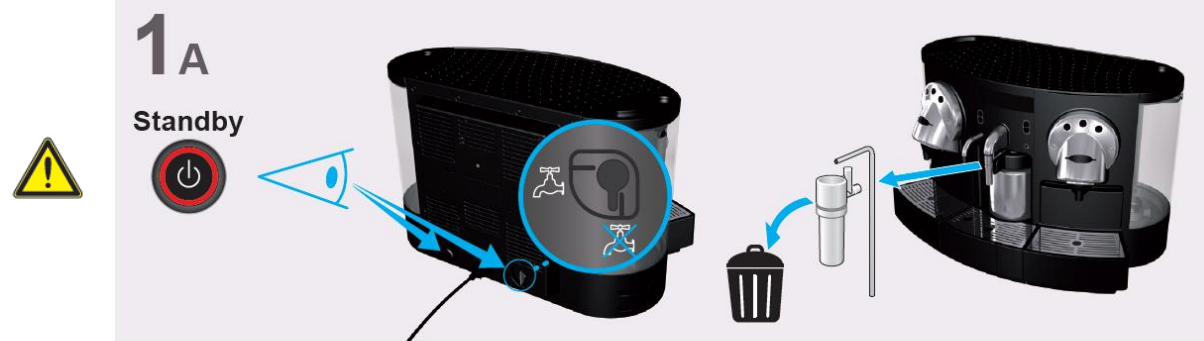
Removal of water tanks - without direct water connection



Daily cleaning - with direct water connection

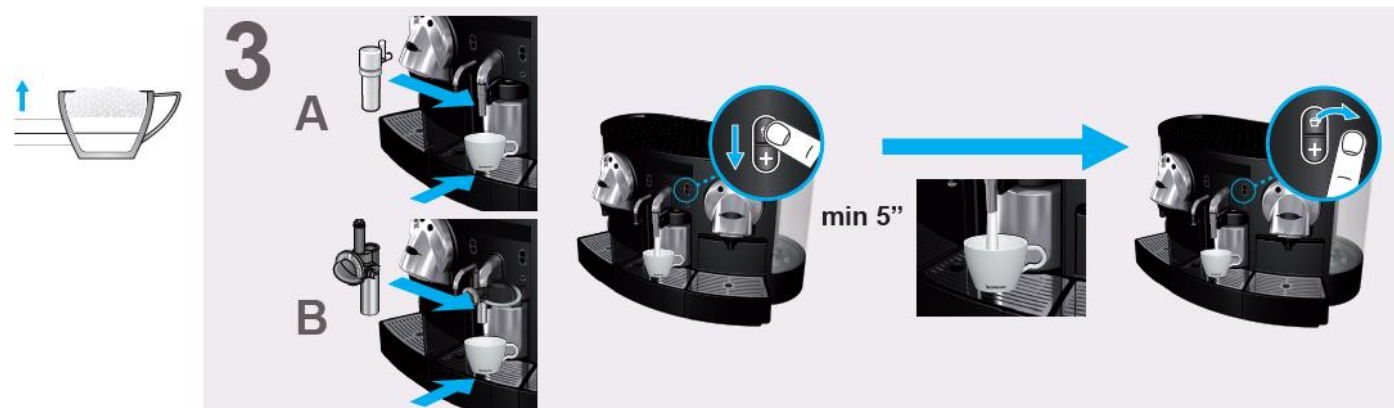


Daily cleaning - without direct water connection



Programming cup length

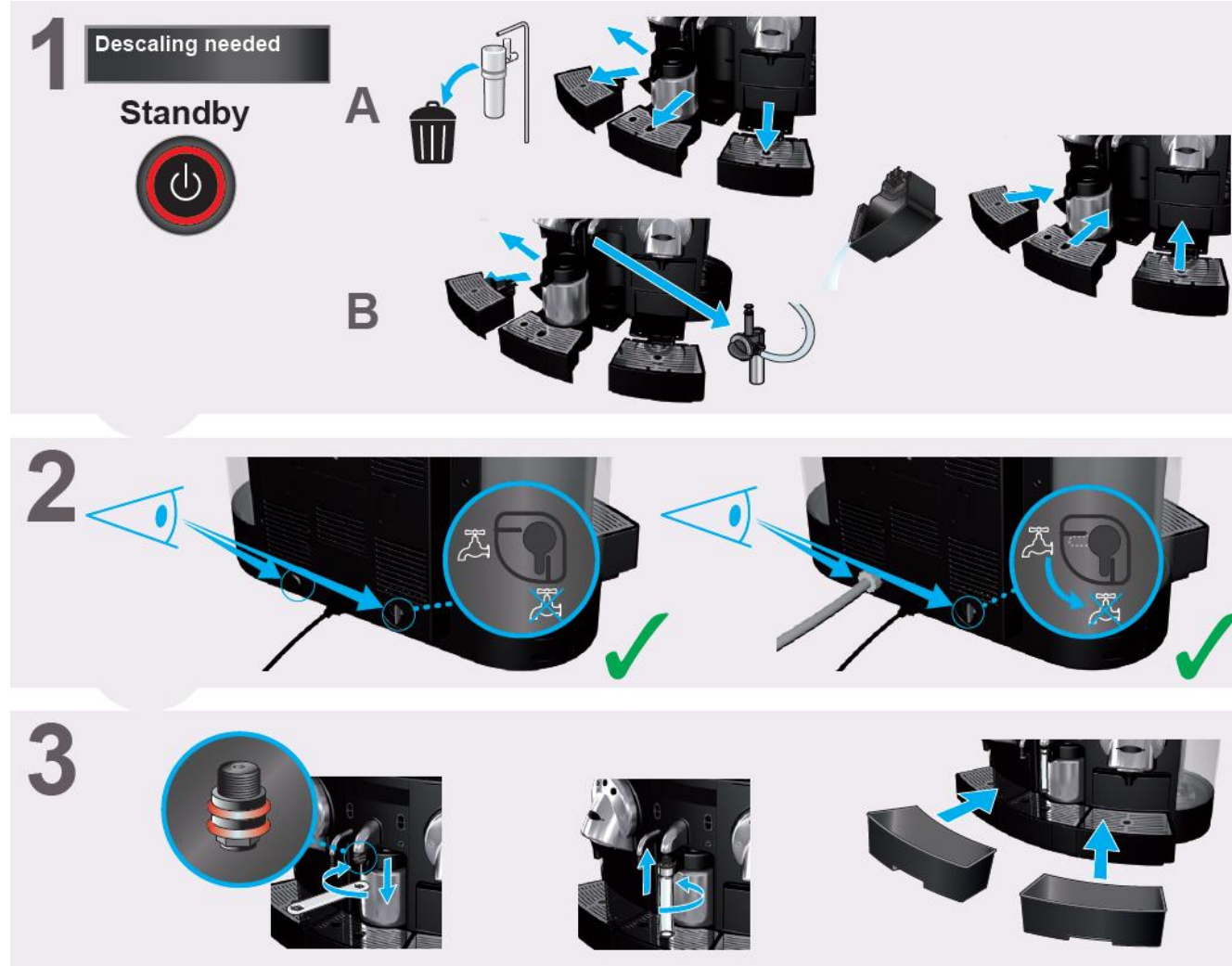
Check in the machine settings menu (see page 23) that the “program cup length” setting is activated (ON).



Descaling – (Explanations on p: 20-21)



Filtreleri çıkartın.



Descaling– (Explanations on p: 20-21)



4

min 3"

Start descaling

1 x

Fill descaling fluid
Push a button

5

2 L

4x 0.1 L

1 L

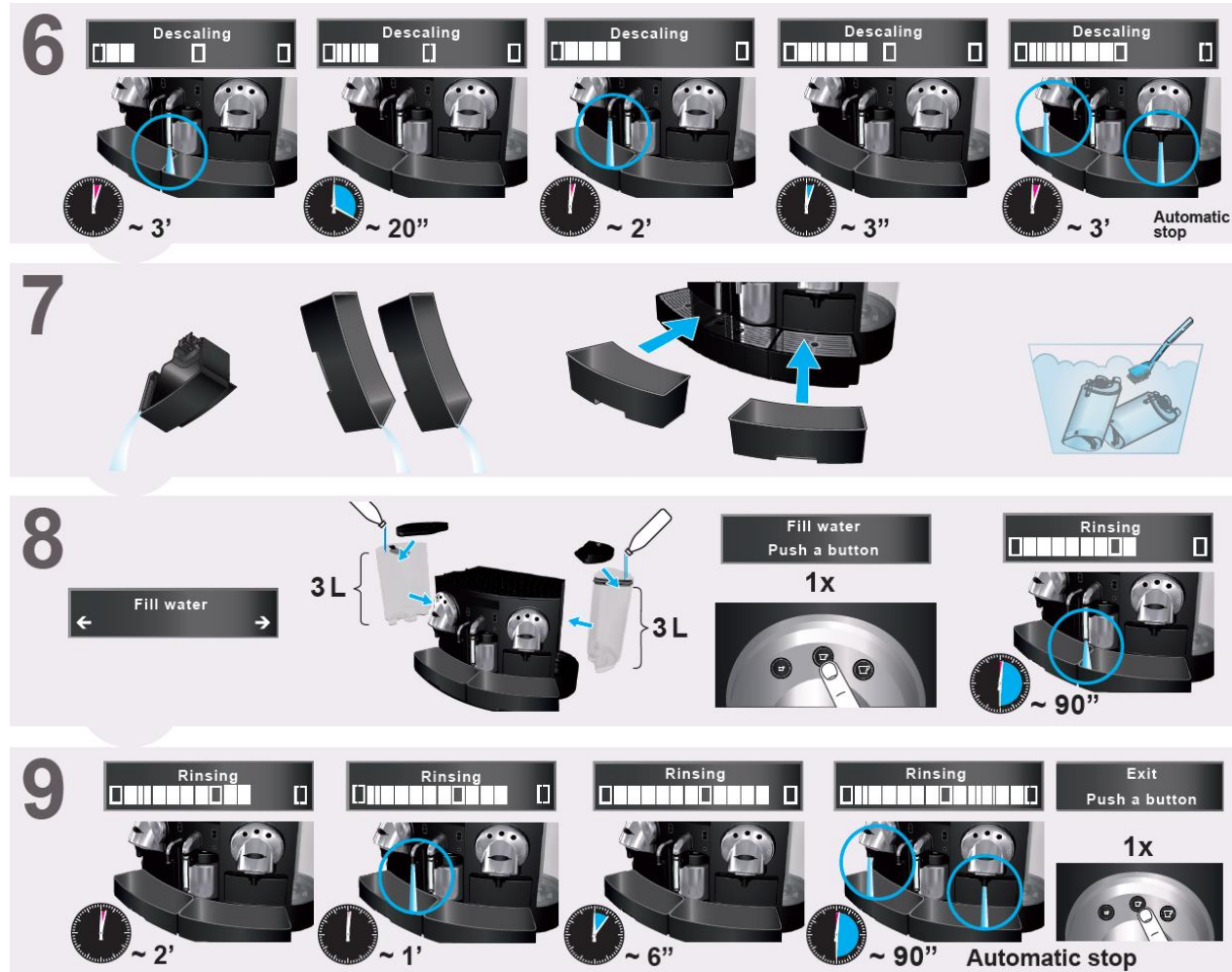
2x 0.1 L

2.4 L

1.2 L

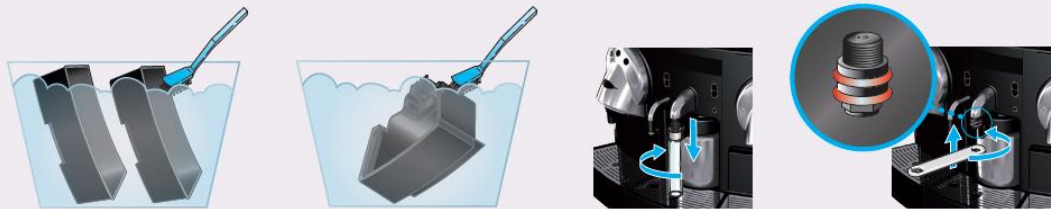
1 x

Descaling – rinsing

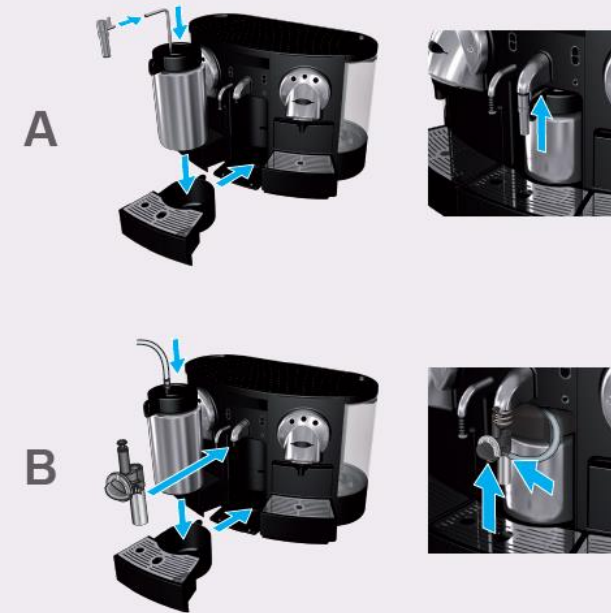


Descaling – rinsing

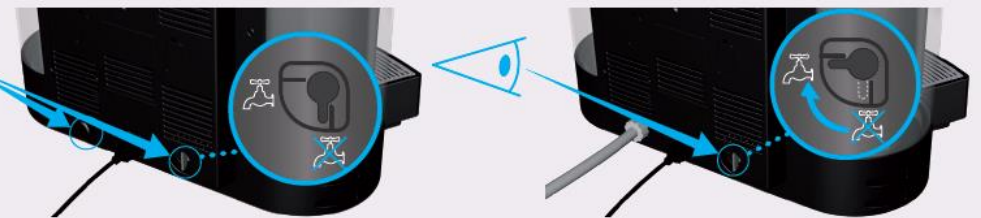
10



11



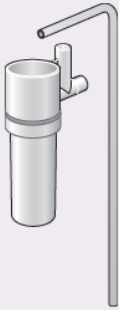
12



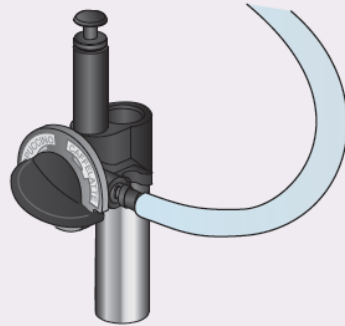
Accessories (not included)

5105

100 x

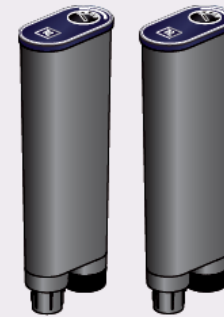


5023



5045/2

2x

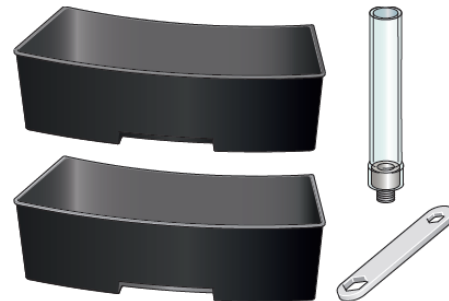


5036/CS

12x







5035/GEMINI











Filter kit

Descaling kit

Technical Data

GEMINI 220	
	 56 cm  36.9 cm  41.5 cm
	max. 2300 W
P	16 Bar Max. 19 Bar
	18 kg
	3 l
	< 70 dbA

Machine Performance

	 AUTO	 MAX.	 60'
	25 ml	60 ml	160/hr
	40 ml	150 ml	148/hr
	110 ml	300 ml	80/hr
	125 ml	400 ml	10 l/hr - 15 l/hr
	1 x Cappuccino	~3 x Cappuccino	–

Recycling



Environment protection first!



Your appliance contains valuable materials which can be recovered or recycled. Leave it at a collection point.



EC declaration of conformity

Espresso Coffee Machine: this product complies with the Machinery Directive 2006/42/EC and the EMC Directive 2004/108/EC.

Espresso Coffee Maker: this product complies with the Low Voltage Directive 2006/95/EC, the EMC Directive 2004/108/EC and the EuP Directive 2009/125/EC.

Contact

Call Nespresso for more information, troubleshooting or advice.

Phone:

0800 211 01 10 (toll-free) /

444 00 21

E-mail: tr.professional@nespresso.com

Website: tr.buynespresso.com

G E M I N I 220